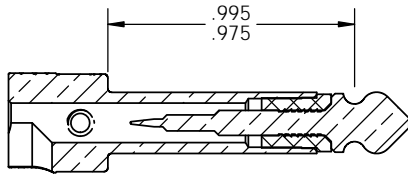


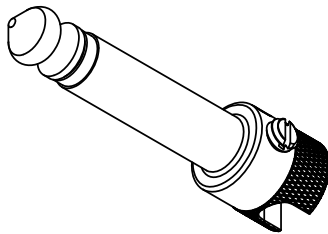
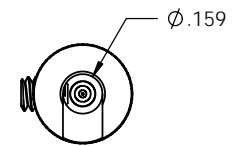
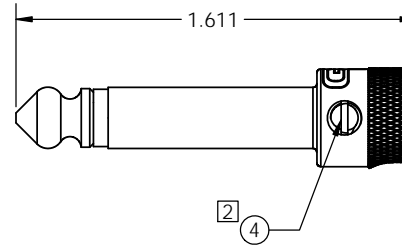
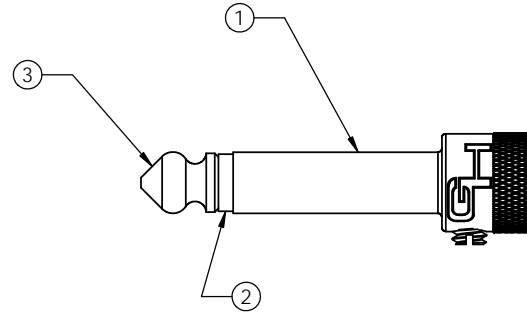
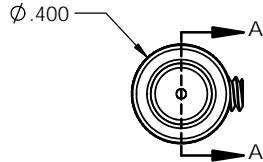
NOTES - UNLESS OTHERWISE SPECIFIED:

- 1. ALL ASSEMBLY DIMENSIONS FOR REFERENCE ONLY
- 2. CUP POINT SET SCREW SIZE 6-32 TO BE DRIVEN WITH SLOTTED SCREW DRIVER PER THE FOLLOWING SIZE:
 TIP WIDTH - 3/32 INCHES OR 2.5 MM
 TIP THICKNESS - <.024 INCHES OR <.7 MM

REVISIONS				
ZONE	REV	DESCRIPTION	DATE	APPR
		INITIAL ENGINEERING RELEASE	06/11/2015	JPH



SECTION A-A



ISOMETRIC VIEW
FOR REFERENCE ONLY
SCALE NONE

QTY	FIND NO	CAGE CODE	PART OR IDENTIFYING NUMBER	NOMENCLATURE OR DESCRIPTION	DRAWING OR SPEC NO	NOTES
1	1		B52STEMN	B52 STEM / CAP		
1	2		X6-3	TUBE PLUG INSULATOR		
1	3		X24-07	TIP W/PIN		
1	4		B52SBN	CUP POINT SET SCREW, SLOTTED		

PARTS LIST

UNLESS OTHERWISE SPECIFIED:		NAME	DATE	ABBATRON 13680 S. MOSIERTOWN ROAD MEADVILLE, PA 16335 814-724-6440 TEL 814-333-1912 FAX	
DIMENSIONS ARE IN INCHES		DRAWN	JPH		TITLE: B52 CONNECTOR ASSY
TOLERANCES:		CHECKED			
FRACTIONAL ± 1/64		ENG APPR.			
ANGULAR: ±1		MFG APPR.			
TWO PLACE DECIMAL ±.01		Q.A.			
THREE PLACE DECIMAL ±.005		COMMENTS:			
INTERPRET GEOMETRIC TOL. PER: ASME Y14.5-2009					
MATERIAL					
See Notes					
NEXT ASSY	USED ON	FINISH	125 Ra, µin	SIZE B DWG. NO. B52N REV -	
APPLICATION		DO NOT SCALE DRAWING		SCALE: 3:1 WEIGHT: SHEET 1 OF 1	

PROPRIETARY AND CONFIDENTIAL
 THE INFORMATION CONTAINED IN THIS DRAWING IS THE SOLE PROPERTY OF ABBATRON. ANY REPRODUCTION IN PART OR AS A WHOLE WITHOUT THE WRITTEN PERMISSION OF ABBATRON IS PROHIBITED.